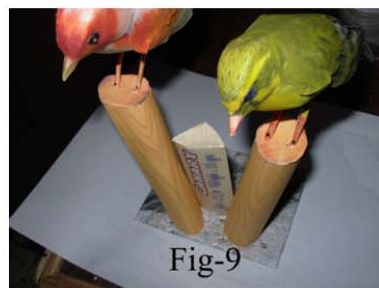
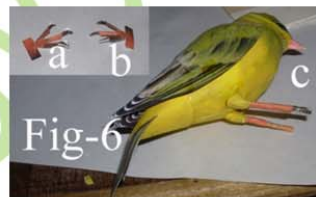
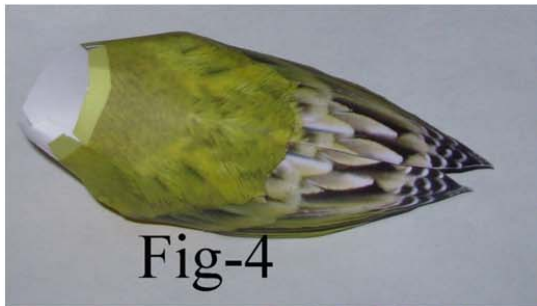
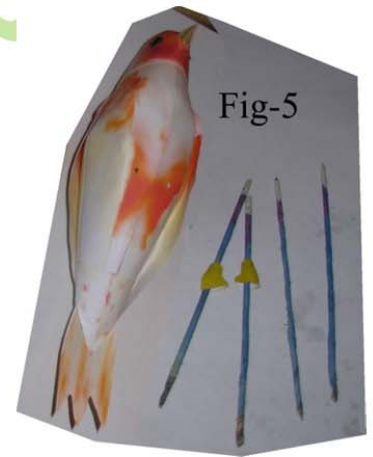
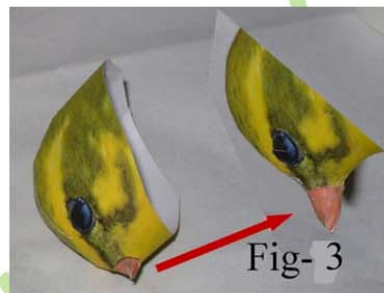
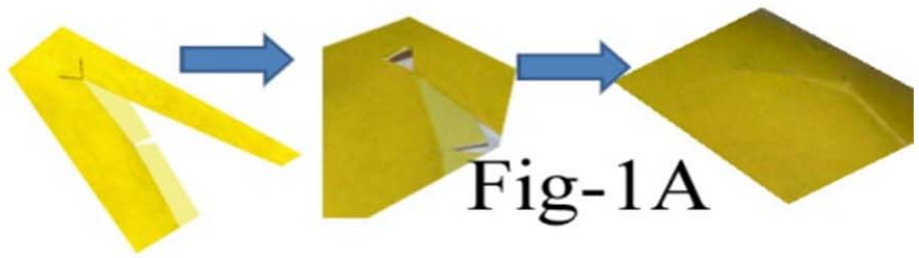
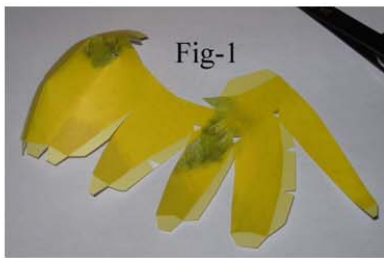


**Before assembly study the final scene and keep in mind- It will help in Assembly**

Disclaimer: We do not claim that model is 100 % correct. This product is non-returnable and we cannot be made responsible for any loss due to printing / assembly. You may have to slightly adjust the pieces during assembly. If you wish, you may do some water color touch up here and there (after completing the model). © sanjaysrivastava  
(This work is protected under Copy Right act. You cannot reproduce it or sell it to other party in any form.) The instruction for both the model is same.

**Assembly Instruction for both Styles**



1. In the Page 2/3 the bird is having lot of 'White color', therefore in many pieces the boundaries is covered with **Brown color**. Before doing assembly you are required to cut and remove this (Fig-12).



For more detailed and reference figures, pl visit [www.papercraftmodel.com/paper\\_craft\\_birds/canary/index.html](http://www.papercraftmodel.com/paper_craft_birds/canary/index.html) for any clarification write to [sanjaycraftmodel@gmail.com](mailto:sanjaycraftmodel@gmail.com)

**Before assembly study the final scene and keep in mind- It will help in Assembly**

2. **Inner tabs** = they join within the same piece.

**External Tabs** = (having a black dot) they join one piece with other piece.

3. Complete all inner tabs of all the items. In case of 'Body' if you found that, there is some mount is coming at the end of Inner tabs (position marked as 'blue' dot in the Fig-11), make a cut in the form of 'V' mark. After joining the Inner Tabs apply some glue and fix the 'V' cut (Fig-1 and Fig-1A).



Fig-11

4. Complete the 'Beak' by applying some glue on 'Glue Point' on LB (Lower Beak), and joining it with 'UB' (matching point 1 & 2). Complete the 'Head' by joining all Internal Tabs. Apply some glue on the hole made for Beak and insert the 'Beak' from inside. (Fig-3).

5. **Optional:-** Take the 'Eyes' provided and make a cut along with black line. Re-join it by overlapping and applying some glue (to give it raised look). Fix these eyes over the eyes of head.

6. Glue back to back:- Left Wing with LW Inner, Right Wing with RW Inner and Tail with Tail Inner.

7. Join 'Top Body' with 'Body' through the point '3' & '4'. Now after apply some glue on 'Glue Points' of wings, fix it with 'Top Body' – by sliding it between 'Top Body' and 'Body' (Fig-4).

8. Now fix 'Head' and 'TB' with 'Body' and glue 'Tail' with 'TB' (Fig – 5).

9. Take 'C' and cut along with 'Black line of 'C' and slightly bend the eadged. Complete Claws 'C' & 'C1' by joining their tips as per 'Blue Arrow'. Trim any mismatch portion and touch up with black color (Fig 6a & 6b).

10. Complete all Inner Tabs of 'LC'. Take four thin wooden sticks of size approx. 10 cm. Wrap it with rough paper and insert through 'LC' (Fig-5).

11. Make 'Stand' as per Fig-7 & Fig-8. Make a small hole on the point marked as '\*' in the 'Body' and 'Stands' (Fig-5 and Fig-9).

12. Insert the wooden stick (with 'LC') into the hole of Body (the green dot of 'LC' should be towards towards 'Tail') (Fig-6c)..

13. Now just insert this into 'Stand' to estimate the size of wooden stick required. Cut the extra length of wooden stick. Now wrap the 'Leg' on the wooden stick (Fig-6c).

14. Apply some glue on the end of wooden stick and insert it into stand (Fig-9).

15. Now apply some glue o 'C' and 'C1' and fix it with 'Leg' (Fig-10)



Fig-10

For more detailed and reference figures, pl visit [www.papercraftmodel.com/paper\\_craft\\_birds/canary/index.html](http://www.papercraftmodel.com/paper_craft_birds/canary/index.html) for any clarification write to [sanjaycraftmodel@gmail.com](mailto:sanjaycraftmodel@gmail.com) For FREE items visit [www.papercraftmodel.com/preview/free.html](http://www.papercraftmodel.com/preview/free.html)