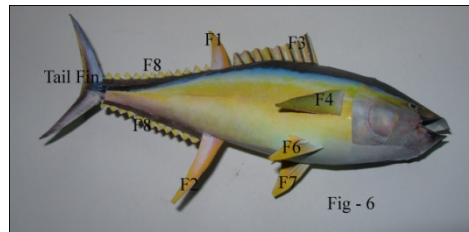
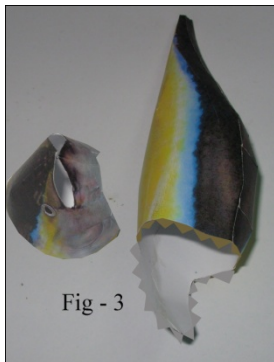
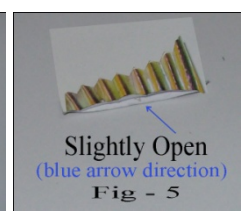
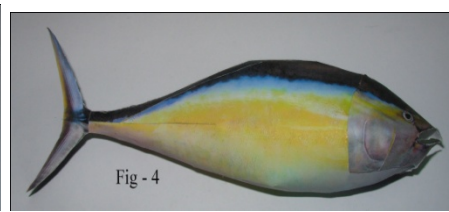
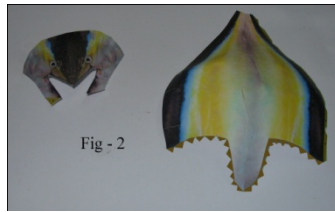
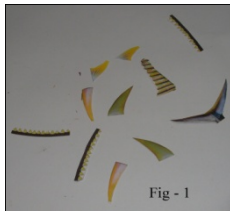


Pl keep the Completed Figure in mind during assembly. This will be useful. There is one extra 'Fish' for practice.

Disclaimer; We do not claim that the model is 100% correct. You may have to slightly adjust the pieces during assembly. If you wish, you may do some 'water color' touch up (here and there). © sanjaysrivastava

Assembly Instruction – Fish Tuna



Fold F1,F2 & F3 fin from middle. Apply glue on one side, (leaving 1-2 mm as per Fig -5) and paste it back to back (some piece are shown in Fig-1). Apply glue on 'F4,F5,F6,F7, F8 & Tail Fin' (leaving 1-2 mm as per Fig -5) and paste it back to

back to 'F41,F51,F61,F71, F81 & Tail Fin' respectively. (2) Complete the body by joining 'Internal Tabs (Fig-2). (3) Join 'A' with 'A' and '1' with '1' (Fig-3) (4) Join Head with body as per point '2','3' & '4' and place Tail Fin (Fig-4). (5) By applying

glue on portion left as per Fig-5, fix 'F1,F2,F3,F4,F5,F6,F7 & F8 as per Fig-6