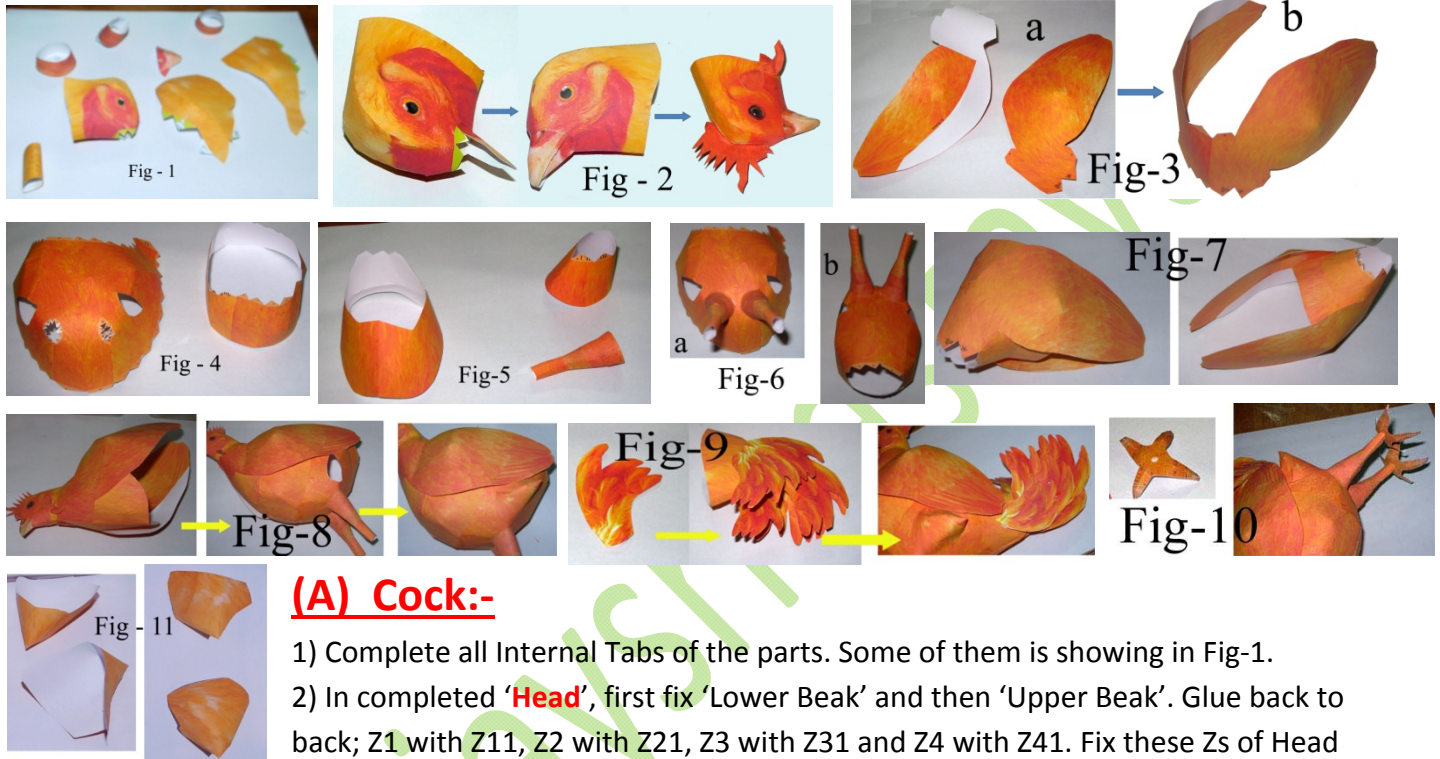


Before assembly study the final scene and keep in mind- It will help in Assembly

Disclaimer: We do not claim that model is 100 % correct. This product is non-returnable and we cannot be made responsible for any loss due to printing / assembly. You may have to slightly adjust the pieces during assembly. If you wish, you may do some water color touch up here and there (after completing the model). © sanjaysrivastava
(This work is protected under Copy Right act. You cannot reproduce it or sell it to other party in any form.)

Assembly Instruction



(A) Cock:-

- 1) Complete all Internal Tabs of the parts. Some of them is showing in Fig-1.
- 2) In completed '**Head**', first fix 'Lower Beak' and then 'Upper Beak'. Glue back to back; Z1 with Z11, Z2 with Z21, Z3 with Z31 and Z4 with Z41. Fix these Zs of Head as per Fig – 2. There are extra Eyes. If you wish, complete the Internal tab and place over the Eyes to give a better look on Head.
- 3) Complete '**Wings**' by joining 'L-Inner' with 'L-Wing' and 'R-Inner' with 'R-wing' (Fig-3a). Join both the Wings through the line 'RL' (Fig-3b).
- 4) Make '**Middle Body**' by joining 'MB' with 'MB1' through the line '16' (fig-4). Make '**Neck**' by joining 'N' and 'N1' through the line '4', '5', '6' and '61'. Make '**Front Body**' by joining 'FB' with 'FB1' with 'FB2' through the line '7', '8' and '9'. Join '**LEG**' with 'LEG1' through '1'; Join 'LEG1' with 'LEG2' through '2'; Join 'LEG2' with 'LEG3' through '3' (make sure that Green Dots ● are aligned). Reference Fig-4 & 'Fig-5'.
- 5) Fix LEGs on Middle Body at the point 'LS' (Fig-6a). Now join '15' with '15' to complete Fig-6b.
- 6) Join 'Neck' with 'Wings' through the Point '1', '2' and '3' Reference Fig '7'.
- 7) Ref Fig-8. Join 'Neck' with 'Front Body' by matching Green Dot ● . Now Fix the 'Head' on 'Neck'. Now Glue 'Middle Body' on 'Front Body'. Complete 'R-P' & 'L-P' (as per Fig-11) and fix 'R-P' and 'L-P' on right and left side on the space provided.
- 8) Complete all Fs by applying glue on half portion and folding from middle (Fig-9). Now Fix half on the Left side and half on the Right side on 'Tail' as per your imagination (Fig-9).
- 9) Complete the 'Claws' and fix with Leg (Fig – 10).

For more detailed and reference figures, pl visit www.papercraftmodel.com/birds/cock/index.html for any clarification write to sanjaycraftmodel@gmail.com

Before assembly study the final scene and keep in mind- It will help in Assembly

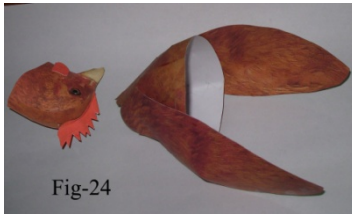
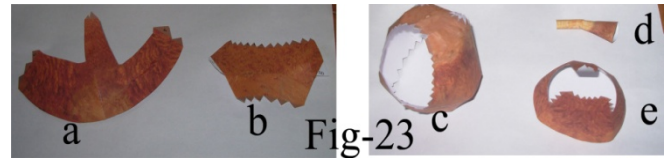
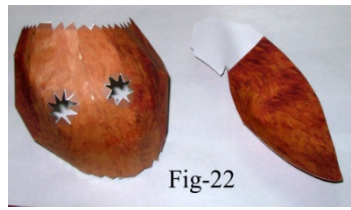


Fig-25

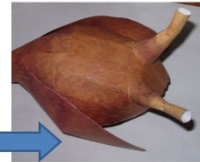


Fig-26



Fig-27

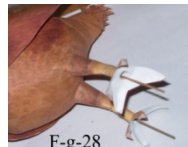


Fig-28



Fig-29

(B) Hen:-

1) Complete all Internal Tabs of the parts. Some of them is showing in Fig-21.

- 2) In completed '**Head**', first fix 'Lower Beak' and then 'Upper Beak'. Glue back to back; Z1 with Z11, Z2 with Z21. Fix these Zs of Head as per Fig – 24. There are extra Eyes. If you wish, complete the Internal tab and place over the Eyes to give a better look on Head.
- 3) Complete '**Wings**' by joining 'L-Inner' with 'L-Wing' and 'R-Inner' with 'R-wing' (Fig-3a). Join both the Wings with 'FB' through the line '2' and '3' (starting from green dot ●). Join 'FB1' with 'FB2' through line '1'. Now join this with 'Wings' through line '4' & '5' (Fig-24).
- 4) Make '**Middle Body**' by joining 'MB' with 'MB1' through the line '11' (fig-22). Join 'MB3' with 'MB2' through the line '10'. Now join this part with 'Middle Body' part (completed by joining MB with MB1) through the line 12 & 13. (Fig – 23c)
- 5) Fix 'Head' with 'Front Body' and then Middle Body with Front Body. Join '**LEG**' with 'LEG1' through '21'; Join 'LEG1' with 'LEG2' through '22' (make sure that Green Dots ● are aligned). Fix LEGs on Middle Body (Fig-25).
- 6) Join 'LB' with 'LB1' through the Point '8' and '9'. Glue this with Middle Body.
- 8) Complete the 'TAIL' and fix 'LT' on it.
- 9) Complete all Fs by applying glue on half portion and folding from middle. Now Fix half on the Left side and half on the Right side on 'Tail' as per your imagination (Fig-26).
- 10) Complete the 'Claws' and fix with Leg (Fig – 28).

Assembly:

- 1) Take 4 wooden stick (2 for Cock & 2 for Hen) of length approx 20 cm. Wrap some rough paper on one end of it (Fig 27). After applying some glue on it, insert it through the Leg (Fig-28)
- 2) Take a Thermocoal / foam block of size approx 20 x 20 cm. Cover it with some paper. Now insert the wooden stick on it, so that the 'Cock & Hen' stands firmly. If required stick Leg to the foam base.