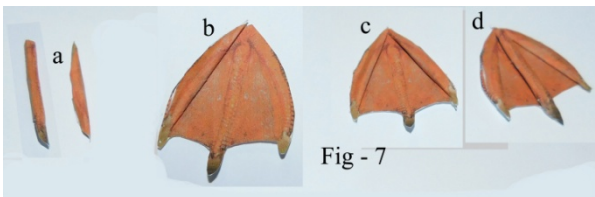
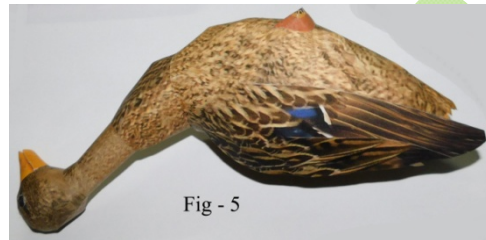
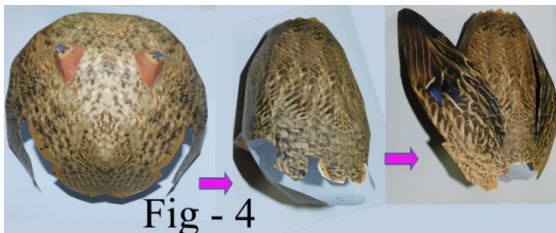
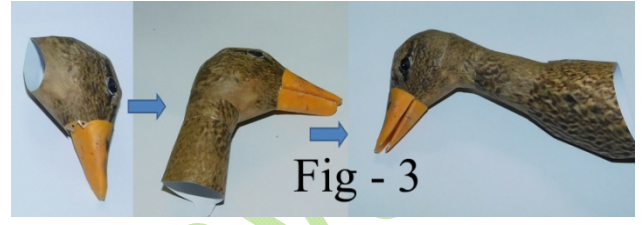
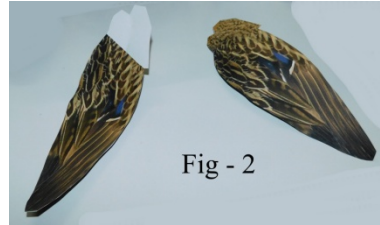
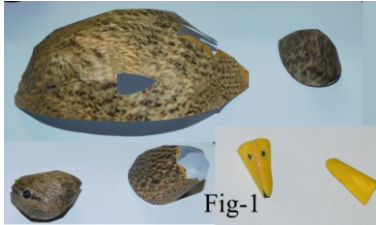


***Before assembly study the final scene and keep in mind- It will help in Assembly***

Disclaimer: We do not claim that model is 100 % correct. This product is non-returnable and we cannot be made responsible for any loss due to printing / assembly. You may have to slightly adjust the pieces during assembly. If you wish, you may do some water color touch up here and there (after completing the model). © sanjaysrivastava  
(This work is protected under Copy Right act. You cannot reproduce it or sell it to other party in any form.)

### Assembly Instruction



- 1) Join all internal tabs of different parts. Some of them are shown in Fig 1 & Fig 2.
- 2) Glue back to back 'Right Wing' with 'Right Wing Inner' and 'Left Wing' with 'Left Wing

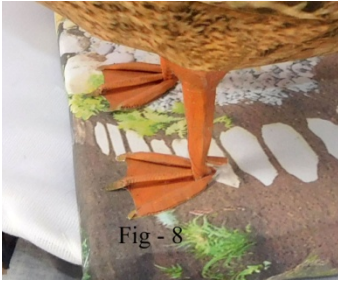
Inner'. Glue back to back all '1' with '11', '2' with '22' and 'Tail Fin' with 'Tail Fin-1'. Trim all white paper, arises due to misalignment during gluing.

- 3) Glue 'Upper beak' and then 'Lower Beak' with 'Head' (Fig-3). Join part 'N1', 'N2' and 'N3', through line 'P1' and 'P2' with 'Head'. Make sure that blue dot is point of joining (Fig-3). If you wish, you may glue 'Extra Eyes' for better look.
- 4) Join 'Left Body' and 'Right Body' through line 'P3' and 'P4'. Glue 'Leg Covers' with body (take care of blue dot position). Glue 'Right Wing' and 'Left Wing' with Body through line 'P5', 'P6', 'P7' and 'P8'. (Fig - 4).
- 5) Glue the Completed Body with Neck (Fig - 5). Now complete 'Feet' by fixing 'R' (Right side), 'L' (Left side) and 'C' (in Center) on it (Fig-7).
- 6) Now take 2 wooden stick of approx 15 cm length and wrap with rough paper.
- 7) Apply some glue at the end of wooden stick and insert it into Bird through 'Leg Cover' as per Fig-6. Join 'Leg' with 'Leg Cover' through line 'P9'.
- 8) Now take a 'foam block' or 'thermo coal' of size approx 18 \* 15 cm and cover with the 'base' print. Mark two small hole at a distance of 5 cm (Fig-7). Put some glue at the end of the wooden stick (leg) and insert in to the thermo coal.

For more detailed and reference figures, pl visit [www.papercraftmodel.com/birds/duck/index.html](http://www.papercraftmodel.com/birds/duck/index.html) for any clarification write to [sanjaycraftmodel@gmail.com](mailto:sanjaycraftmodel@gmail.com)

*Before assembly study the final scene and keep in mind- It will help in Assembly*

9) Now glue 'feet' at appropriate place (Fig- 8).



© Sanjaysrivastava