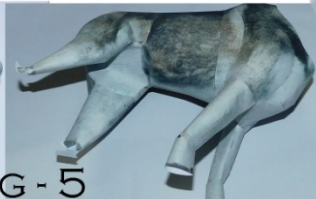
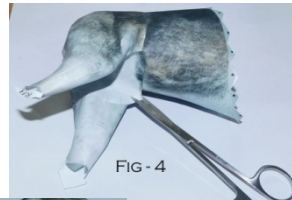
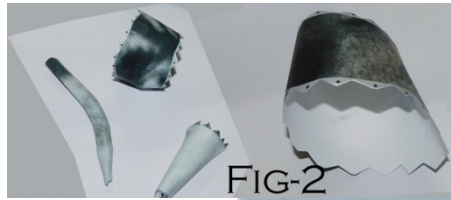


***Before assembly study the final scene and keep in mind- It will help in Assembly***

Disclaimer: We do not claim that model is 100 % correct. This product is non-returnable and we cannot be made responsible for any loss due to printing / assembly. You may have to slightly adjust the pieces during assembly. If you wish, you may do some water color touch up here and there (after completing the model). © sanjaysrivastava  
(This work is protected under Copy Right act. You cannot reproduce it or sell it to other party in any form.)

### **Assembly Instruction**



.1) Join internal tabs of all parts. Some of them are shown in Fig-1 & Fig-2'

2) Back Body: Take care while

joining 'A' & 'B' with 'A' & 'B' and 'E' with 'E'. Now Join this piece with 'Middle Body' by taking reference at point '9'. You will see lots of gap between the legs. Now glue 'Bottom Cover' at this place. You may have to trim / cut 'Bottom Cover' with the help of scissors (ref Fig – 4) for perfect finish.

3) Front Body: Take care while joining 'A' & 'B' with 'A' & 'B'. Now Join this piece with 'Middle Body' by taking reference at point '8'. (Fig – 5).

4) Complete Left Front leg (Joining LF, LF1 & LF2), Right Front leg (Joining RF & RF1), Right Back leg (Joining RB, RB1 & RB2) and Left Back leg (Joining LB & LB1). Now fix these legs at appropriate place, taking point 6, 3, 12 & 15 as reference.

5) Now fix 'Neck' to the body (point '3' as reference point).

6) Head: Complete 'Head body', 'Lower Jaw', 'Upper Jaw' and 'Ears' separately. Now first join the 'Upper Jaw' then 'Lower Jaw' and finally both the 'Ears' to 'Head Body' (Fig-3).

7) Now Glue Head with Body.



For more detailed and reference figures, pl visit

[www.papercraftmodel.com/paper\\_craft\\_mammals/dog/index.html](http://www.papercraftmodel.com/paper_craft_mammals/dog/index.html) for any clarification write to [sanjaycraftmodel@gmail.com](mailto:sanjaycraftmodel@gmail.com)