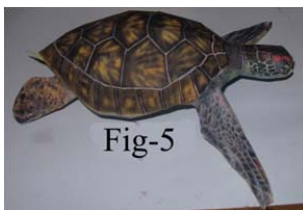
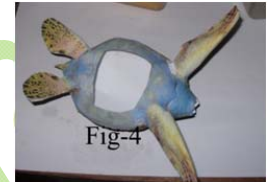
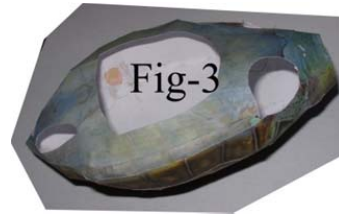
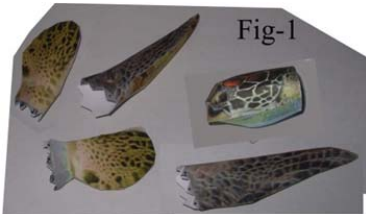


Before assembly study the final scene and keep in mind- It will help in Assembly

Disclaimer: We do not claim that model is 100 % correct. This product is non-returnable and we cannot be made responsible for any loss due to printing / assembly. You may have to slightly adjust the pieces during assembly. If you wish, you may do some water color touch up here and there (after completing the model). © sanjaysrivastava
(This work is protected under Copy Right act. You cannot reproduce it or sell it to other party in any form.)

Assembly Instruction – See Turtle – (A)



1. **Inner tabs** = they join within the same piece. **External Tabs** = (having a black dot) they join one piece with other piece.

2. Complete all inner tabs of all the items. The two Back Legs (RBL=Right Back Leg; LBL=Left Back leg), Shell & Head will complete with this (Fig-1 & Fig – 2).

3. Join 'Body' with 'Base' through the line 4,5 & 6 (Fig-2).
4. Complete RFL (Right Front leg) by joining RFL-1 with RFL-2 through the line 1,11,21.
5. Complete LFL (Left Front leg) by joining LFL-1 with LFL-2 through the line 2 & 21.
6. Fix (from inside) fix Eyes' into Eye Socket.
7. Join 'Body' with 'Shell' through the line 51,52,53 & 54. Starting from point marked with **green dot**. (Fig-3)
8. Fix all the four legs as per Fig-4.
9. Join 'Neck' with Shell & Body by matching Yellow dot. Fix the head on this (Fig-5).
10. Insert 'Tail' through the point 'T' of Base.